

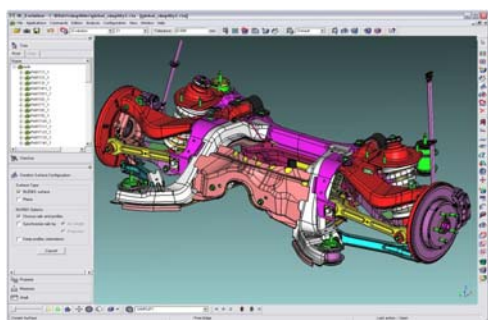
3D Evolution[®]



APRIL 2008

CONVERSION ENGINE

Optimise your data exchange with customers, sub-suppliers and engineering partners with a loss free conversion and automatic healing of 3D Models. With its Interfaces for all important CAD Formats 3D_Evolution[®] is a flexible and powerful extension for every CAD-Environment. The Software is built modular and has an easy to use GUI. A scripting language makes all functions also available in batch mode.

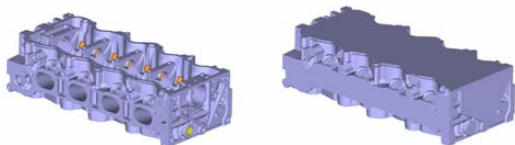


FEATURE BASED

This fully integrated module allows for an interoperability with history and parametric. Native Interfaces directly read also the feature information without access to the source CAD-System. The history optimisation during the transformation process is taking full account of the feature types available in the target system. CT Plugins in the target CAD-System automatically generate the model. The resulting geometry can be compared to the source model. Potential discrepancies will be highlighted in the GUI. Batch or interactive process mode is available.

SIMPLIFIER

The simplifier module generates a bounding geometry of individual parts or assemblies by removing all internal faces to protect your intellectual property or generating light weight models. The result of the simplification is a bounding geometry in the form of a perfect solid. In assemblies internal parts can automatically be detected and deleted.



PDQ CHECKER

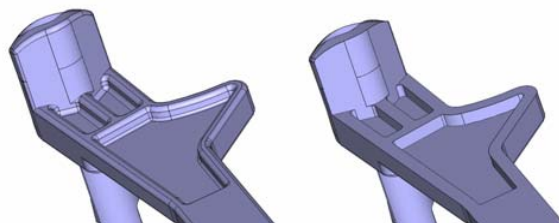
The different error-types are displayed on the model and can be easily identified and resolved within seconds using special Repair functions. The Checker is certified for the VDA 4955/2 and SASSIG specifications.

ENTERPRISE BATCHMANAGER

Allows all users in a company network to access the 3D_Evolution[®] batch mode. Also, users of different Windows, Linux and Unix operating system environments are free to individually define their conversion tasks being processed in the central job list. Multiple network computers can be used to convert extensive data.

FEM TOOLS

The ideal link for the seamless connection between the CAD and the FEM worlds. Mini patches and their basic surfaces can be merged through the Metaface function within user-defined tolerances. Defeaturing functions for geometry simplification, automatically remove features such as holes, rounds, chamfers and small details. The function can be set by user defined parameters.



OPERATING SYSTEMS

- Windows – 2000 /XP / or VISTA
- Linux – Suse and Redhat

LICENSEMANAGER

- Nodelocked or Floating using the FlexIm Netlicense-Manager.
- Also available for UNIX as well as Triple license servers

LANGUAGES

- Menu and Online-Help in English, French and German.

About Intrinsys

As the sole UK distributor for 3D_Evolution, Intrinsys uniquely combines PLM solution provider with its own thriving engineering consultancy business working in the Automotive, Aerospace, Marine and Rail industries. Enabling competitive advantage from tools like 3D_Evolution is what Intrinsys do best, providing comprehensive and intimate service offerings to its clients.

The strength of Intrinsys is the quality and passion of its engineers who while working in the real world of an engineering consultancy, also having an extensive understanding and experience of PLM solutions and their applications. When combined with a culture of quality customer service support, these attributes have seen the company grow in both size and capability over recent years.

Intrinsys Sole UK distributor of CoreTechnologie products

For further information contact:

| Michael Hegarty
| e: mhgart@intrinsys.co.uk
| t: +44(0)1908 278639